

Handwriting is inextricably linked to the teaching of phonics and spelling. As such, we believe at Primrose Hill that handwriting is a skill that must be explicitly taught and practised regularly. We do not follow a bought 'scheme'; rather we use a consistent approach of teaching handwriting throughout the school using Martin Harvey's guidelines and clear terminology. The approach progresses through the school with an emphasis being placed on the use of consistent language.

It is based on the Nelson Handwriting scheme with some adjustments such as :no lead ins or loops. It is simplistic but clear.

In line with Martin Harvey's Achieving Excellence in Handwriting Guide, all letters should match the agreed formation when being modelled to children.

Capital letter formation and number formation needs to be taught.

Capital letters need to be tall and are never joined.

Before any letters are joined children must be secure in their formation of letters and writing should be legible across several pieces of work.

Once children are accessing cursive writing, it is important to note that we do not join from z, b, p, s, y, g, j and q but we can join to these letters.

There is no looping on tail letters.

### Transferring handwriting across the curriculum

In order to ensure that the skills learned in discrete handwriting sessions are carried forward into other aspects of learning, it is important to insist, motivate and expect certain things from our learners.

Correct posture and correct sitting position throughout the school day.

Correct letter formation and correct letter joins in cross curricular writing.

Insist on children producing their very best whenever it is required .

Give targeted praise for handwriting and presentation when it is merited

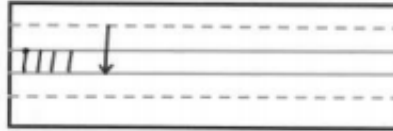
Motivate children by telling them exactly what you are looking for.

Motivate children by celebrating their efforts and achievements with displays of their written work, showing it is really valued.

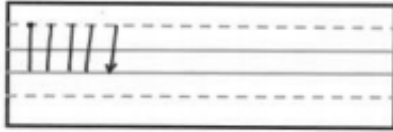
Make it clear to children that what you expect from them is their very best at all times.

Make it clear to children that nothing less than their own best is acceptable.

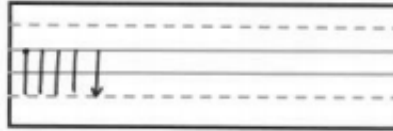
Short Lines



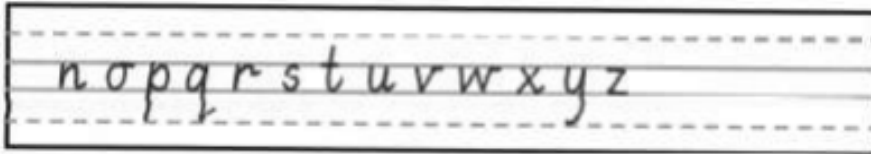
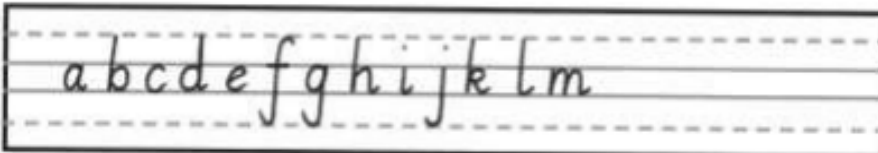
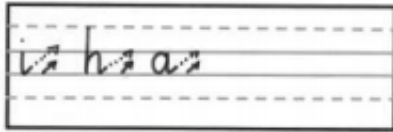
Tall Lines



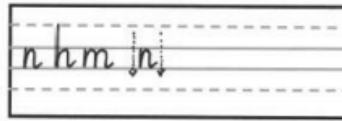
Tail Lines



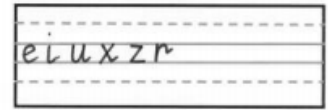
North-east Joining Line  
or



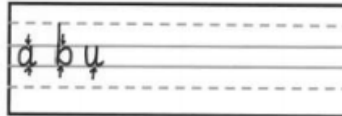
Narrow bridges



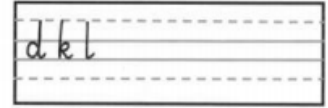
Small letters



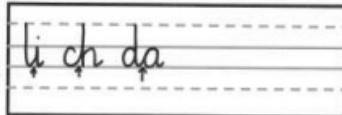
Letters with triangles



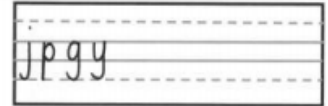
Tall letters



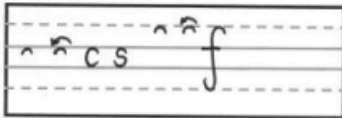
Joins with triangles



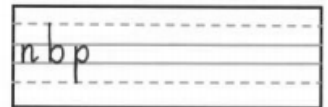
Tail letters



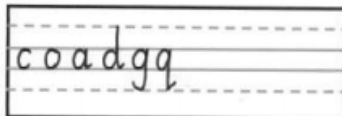
Coat hanger hooks



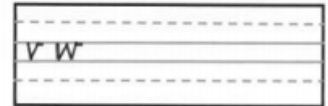
Narrow letters



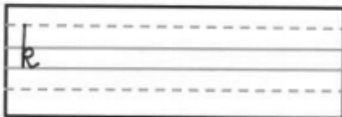
Egg shapes in the coat hanger letters



Letters with sharp points



Shoe lace k



Narrow curved tails

